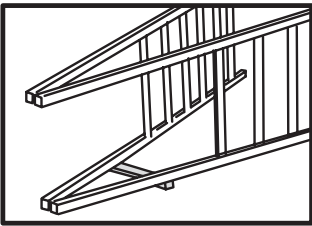


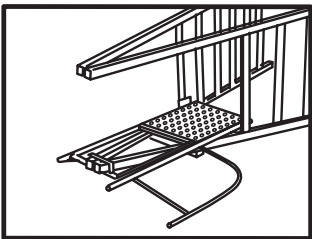
Instructions to fit NEW TRESTLE PLATFORM onto trestle ladder.

**TOMMY TUCKER
TRESTLES
AND PLANK FACTORY**
8-10 Kenway Dr. Underwood, Q. 4119
(07) 3290 2705
Fax: (07) 3290 0155
Email: tommytuckertrestles@bigpond.com.au
Web: www.tommytuckertrestles.com.au

1. Move the **Tommy Tucker Trestle Ladder** to a position near where it is to be used.
2. Give consideration to how the trestle ladder will be positioned once it is fully set up.
3. Lay trestle ladder on its side in the fully open position. To ease the fitting of the platform, timber may be used to slightly lift the lower top end above the supporting surface as shown.

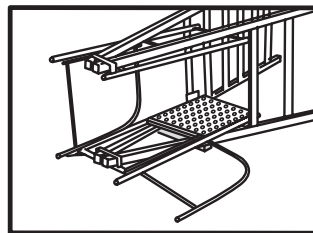


4. Lay the main trestle platform assembly (the assembly containing the swing down platform) over the top end of the trestle ladder as shown

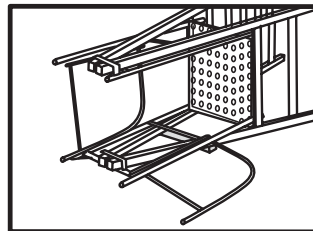


5. Slide the main trestle platform assembly down until it locks into position. Note that the yoke locks into position over the trestle ladder's top end and the platform slides between the trestle ladder's top rungs.

6. Slide the yoke of the remaining smaller assembly (that is the part not containing the swing down platform) into position over the trestle ladder's upper top end as shown.



7. Swing the checker plate platform into place between the top two rungs of the trestle ladder as shown.

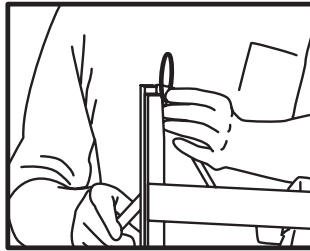


8. Close both gates using the simple ring lock system (please refer to description for locking and unlocking the gates using the ring lock system).
9. Lift the trestle ladder into the upright position. Please ensure there are sufficient people to perform this lift particularly when using the larger trestle ladders.
10. Set up trestle ladder by following the setup instructions on the sticker on the side of each **Tommy Tucker Trestle Ladder**.
11. When free of any connected members the trestle ladder can be dismantled by laying it on its side and reversing the above procedure.

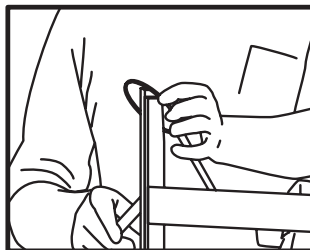
Instructions to lock and unlock ACCESS GATES

TO LOCK

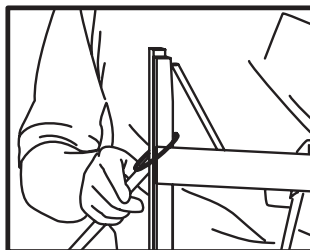
1. Swing the gate to the closed position adjacent to the raised pole.



2. Lift the ring to the top of the triangle.



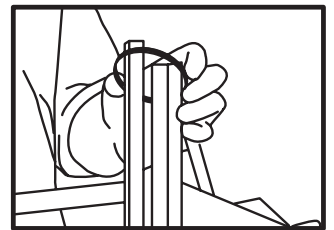
3. Drop the ring over the raised position of the gate



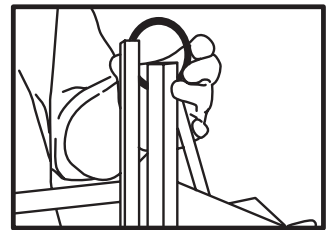
4. Let the ring drop down until it reaches the top rail of the gate and now the gate is in the locked position.

TO UNLOCK

1. Ensure that the gate is not supporting your weight in any way.



2. Lift the ring as far up as it will go, that is to the top of the triangle.



3. Pull the ring back away from the gate and let it drop. The gate is now free to open.

The manufacturer
Tommy Tucker Trestles Pty. Ltd.
will not be responsible for damage
or injury to persons through
misuse of this product.